

IP Camera

QUICK GUIDE FOR IE

(for Windows XP/2003/Win7/Vista)

Preface

Thank you for using our IP camera products. This series of products are all-in-one IP cameras designed for network video surveillance, including box IP camera, infrared box IP camera, dome IP camera, speed dome IP camera, etc. The products adopt high performance and powerful single SOC chip media processor to integrate audio and video capture, compression and transmission. Standard H.264 Baseline and Main Profile coding algorithm ensures clearer and smoother video transmission effect. Built-in Web Server allows users to easily perform real-time monitoring and remote control over front-end cameras via IE browser.

This series of IP cameras is suitable for small and medium-sized enterprises, families, and other environments that require remote network video transmission and monitoring. It is easy to install and operate.

1, Network Interface of IP Camera

The default network ports of IP camera are:

TCP	80	Web port
	5000	Communication port, audio/video data transmission port, talkback data transmission port
UDP	5000	Audio/video data transmission port
ONVIF	2000	

Users can check the port as follow path:Config->Network settings->Basic

2, Default Parameters

Default parameters

Cabled Network:	
IP Address: 192.168.1.88	Data Port: 5000
Subnet mask: 255.255.255.0	Web Port: 80
ONVIF port: 2000	
Gateway: 192.168.1.1	DHCP: OFF
DNS: 8.8.8.8	
User: admin	
Password: admin	

3, Download and install ActiveX

You need to install ActiveX Control when you visit IP camera for the first time through IE browser.

ActiveX installing method:

Download installation

Input the IP address of IP camera in Internet Explore to enter into login page(see Figure 1),

Click [\[File\]](#) to download the ActiveX:

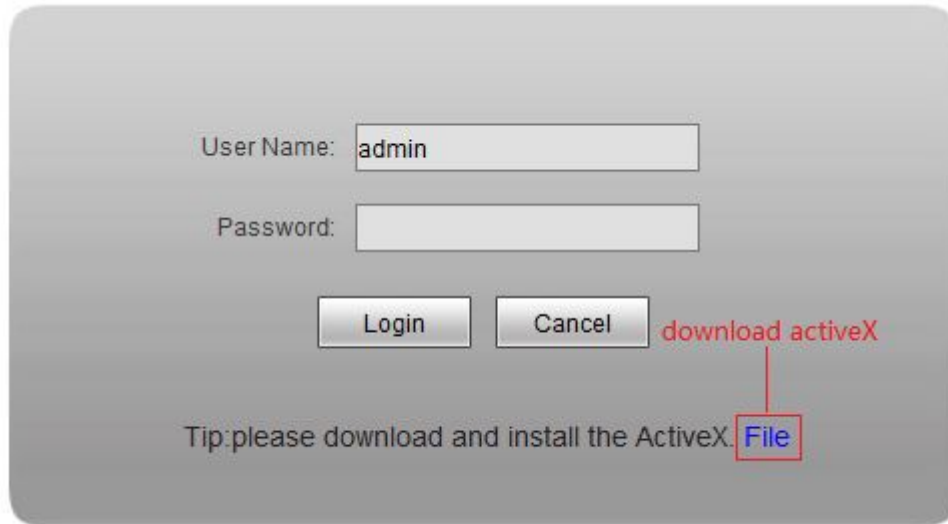


Figure 1

You can download the ActiveX manually or just input the password, then download the file as system prompt. (see Figure 2)



Figure 2

File download dialogue box pops up, click [Run] or [Save] to download ActiveX, after download it, double-click the downloaded file "WebCMS.exe" and choose the language, then install it.

NOTE: Abnormal phenomenon when install ActiveX and the solutions:

1: when install the ActiveX, it pops up the window as Figure 3:



Figure 3

please change the security level of IE, IE tools-> Internet options->Security->Custom level as Figure 4, and change the parameters as Figure 5, Figure 6:

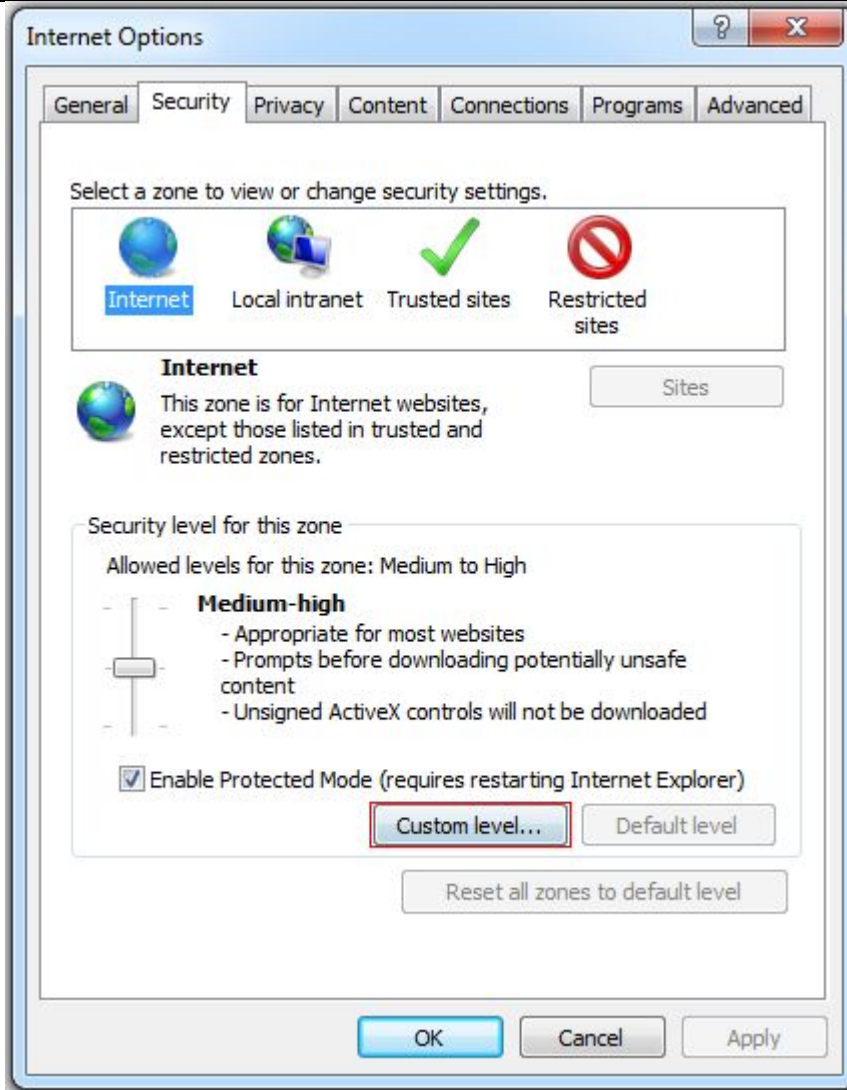


Figure 4

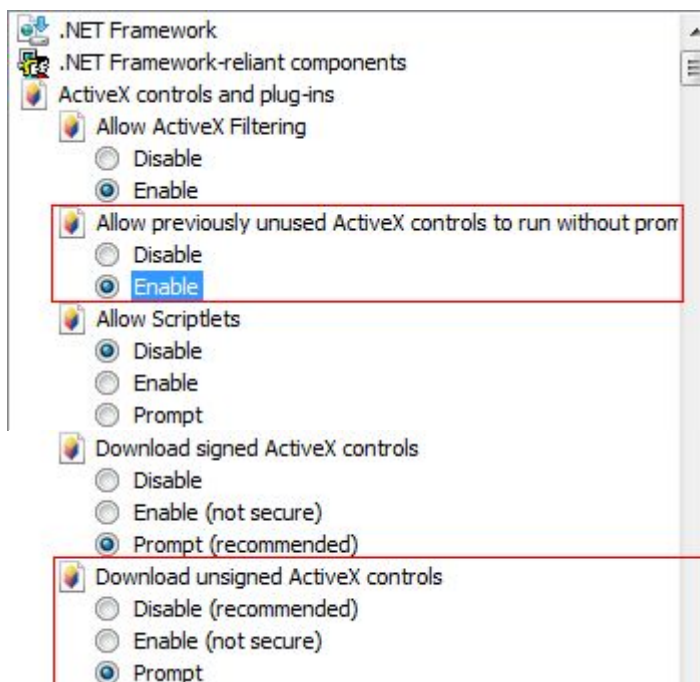


Figure 5

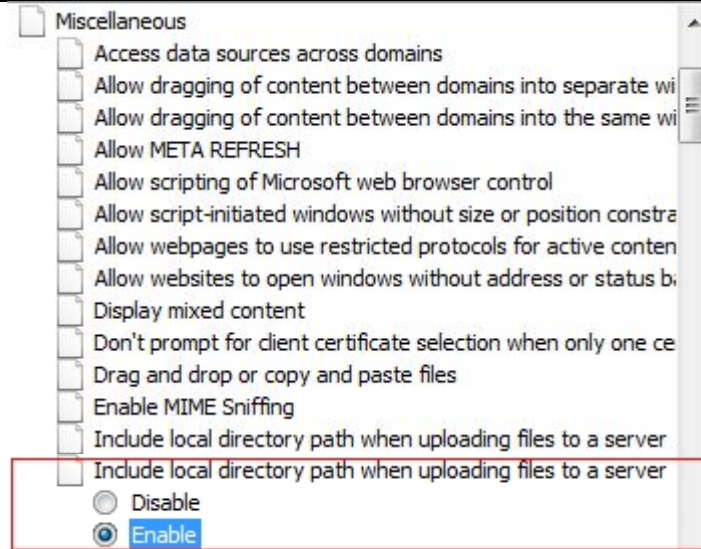
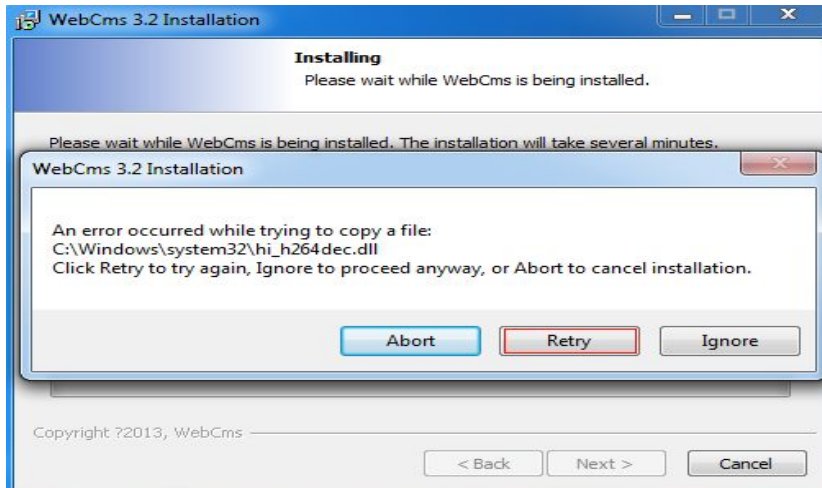


Figure 6

2: when install the ActiveX, it pops up the window as follow, please close the IE and CMS, then click "retry".



4, Login

Before login the camera, please confirm that, the network segment of the camera and local PC is the same. Eg: IP address of camera is 192.168.1.100, so the IP address of local pc should be 192.168.1.*** .

The default IP address of camera is 192.168.1.88, so we should check the IP address of PC in the network segment 192.168.1.*** or not. Start->run->CMD, input the command ipconfig -all to check the IP address of PC, if the IP in the 192.168.1.*** as follow, so we can access the camera:

```

Microsoft Windows [Version 6.1.7601]
Copyright (c) 2009 Microsoft Corporation. All rights reserved.

C:\Users\Bevis>ipconfig -all

Windows IP Configuration

Host Name . . . . . : Bevis-PC
Primary Dns Suffix . . . . . :
Node Type . . . . . : Hybrid
IP Routing Enabled. . . . . : No
WINS Proxy Enabled. . . . . : No

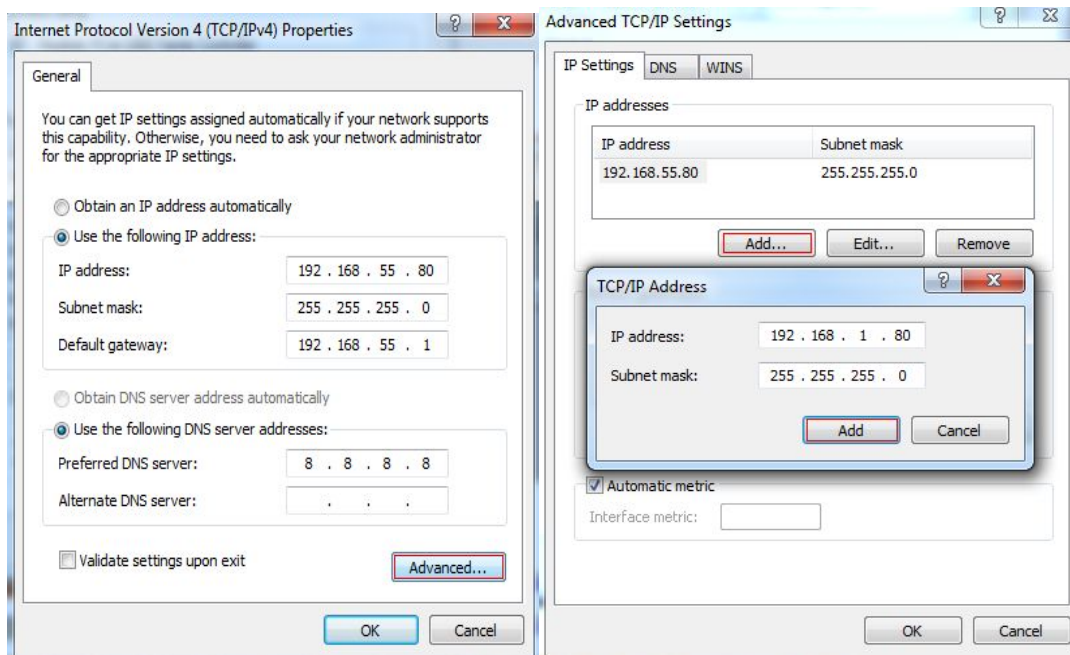
Ethernet adapter Local Area Connection:

Connection-specific DNS Suffix . . :
Description . . . . . : Realtek PCIe GBE Family Controller
Physical Address. . . . . : 60-A4-4C-B3-4A-EA
DHCP Enabled. . . . . : No
Autoconfiguration Enabled . . . . : Yes
Link-local IPv6 Address . . . . . : fe80::314f:65ad:d984:453d%10(Preferred)
IPv4 Address. . . . . : 192.168.1.80(Preferred)
Subnet Mask . . . . . : 255.255.255.0
IPv4 Address. . . . . : 192.168.55.80(Preferred)
Subnet Mask . . . . . : 255.255.255.0
Default Gateway . . . . . : 192.168.55.1
DHCPv6 IAID . . . . . : 241214540
DHCPv6 Client DUID. . . . . : 00-01-00-01-19-81-EF-F9-60-A4-4C-B3-4A-EA

DNS Servers . . . . . : 8.8.8.8
NetBIOS over Tcpip. . . . . : Enabled

```

If not, for example, the IP of PC is 192.168.55.80, we can add a new network segment to PC, open network and sharing center->local area connection->priorities->Internet Protocol Version 4(TCP/IPv4)->priorities.use the following IP address,input the IP address,subnet mask,gateway and DNS, which you can get from the picture above, then click “advance” to add a new network segment, and click add, until finish it.



Reopen Internet Explorer after ActiveX installation completes, input IP address of the IP camera to turn to login page, enter username and password (default setting is admin/admin), click login to enter into main interface(see Figure 7):

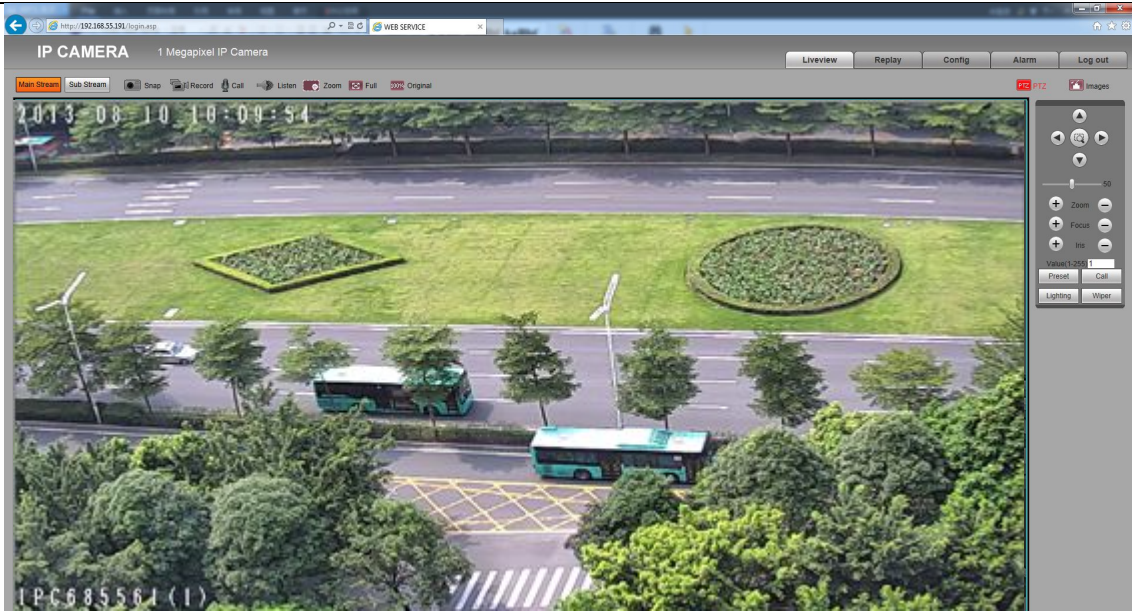

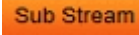
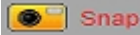

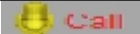






Figure 7

5, Main function brief introduction

The main icon and function in the main interface list as follow :

	Call the Main stream		Call the Sub stream
	Manual snapshot		Manual record
	Dual audio		One way audio
	Digital Zoom		Full screen
	Original W:H ratio		PTZ Control
	Adjust images value		

For manual snapshot and record, the images and recording files will keep in the path, please reference config->local config->record file path.

For listen function, it works when audio enabled, audio disable as default.

For images, we can set more parameters, config->video settings->video parameters.

6, System information

Check System information and change language of camera:

After login the camera, follow the path:Config->System->System Info to check the information of camera



The screenshot shows the 'System' configuration page. It features several input fields and a dropdown menu:

- Device Name: IPC921809
- VO Standard: PAL
- Language: English
- Device ID: 921809
- Version: 1.6.0.128
- WEB Version: 6.1.0.113

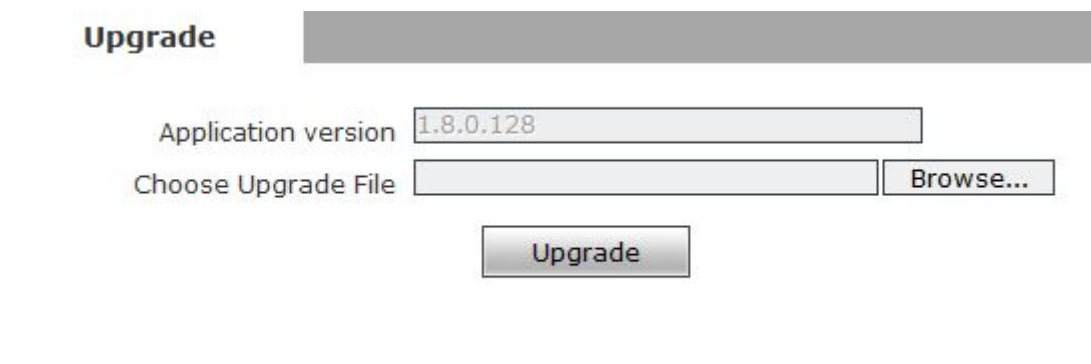
Below the fields is a 'Save' button. A red asterisk warning message reads: '* Modifying the device language, please close the browser to login.'

Figure 42

[Language]: Support Chinese and English, after changing the language, please reopen the IE browser to login the camera again.

System upgrade:

After login the camera, Config->System->Upgrade, and will see the window as follow:



The screenshot shows the 'Upgrade' configuration page. It features the following elements:

- Application version: 1.8.0.128
- Choose Upgrade File: [Empty field] [Browse...]
- Upgrade button

Figure 45

Click "Browse" button, and select correct file of upgrade (kernel file, suffix.uot), click **[upgrade]**, then you can upgrade your system, the completion rate will be displayed

during this process. After upgrade completes, IP camera will restart automatically. Re-log in device, enter into system settings page, check to see whether the kernel edition is the upgraded edition.



Notice:

1. Don't cut off the power and internet connection while upgrading.
-

Basic FAQs

1、 Forget Password

Solution: There is a [RESET] button on the back panel of the IP camera, press it 1-2 seconds, then loosen it 1-2 seconds, and try 3 times . Camera will restore all default parameters (Factory Settings), user name and password are both “admin”. And IP address is 192.168.1.88



Notice: Please don't press RESET if you are not a professional operator. After reset, all parameters will restore factory settings (except for the physical network address).

2、 No video image displayed in IE browser

Possible reason: ActiveX not installed

Solution: ActiveX must be installed when visiting IP camera for the first time via Internet Explore.

How to install: Visit IP camera, click [file], file download dialog will pop up, select [Run] or [Save] to download. Please reference the ActiveX install part to install the ActiveX.

3、 Fail to visit IP camera via IE after upgrade

Solution: Delete the caching of Browser.

Steps: Open IE—click “Tools”—select “Internet Options”—click “delete files” button in “Internet temporary files”, select “delete all offline contents”, then click “OK” and re-log in IP camera.

END